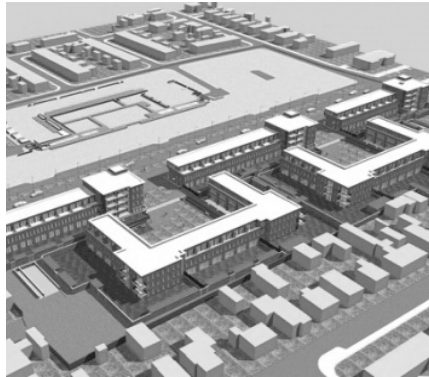


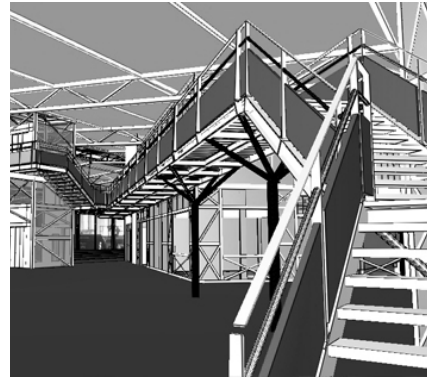
ARCHITECTURE



BIM



ENGINEERING



DESIGN COORDINATION



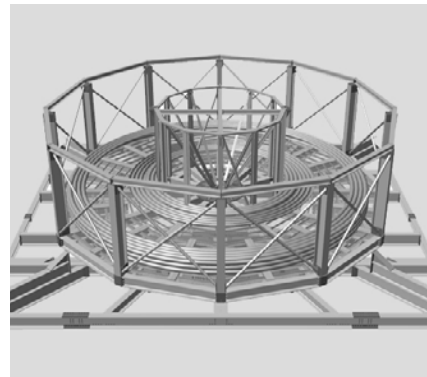
4D PLANNING



QUANTITY



CLASH DETECTION



BUILDING PROGRAMMING



VISUALIZATION



DOCUMENTATION

BIM CONSULTANTS



3D Blueprint India

3D BluePrint India Pvt. Ltd. is a subsidiary of the 3D BluePrint group and established in Ahmedabad in January 2007. The parent, 3D BluePrint Architects and Engineers is a Dutch company, founded in 2002 in Amsterdam. 3D BluePrint is an innovative architectural and engineering group who's main functions are architecture, design coordination and engineering. Our activities cover the complete building cycle from initiation up to completion, making efficient and smart usage of 3D Building Information models (BIM*) in all stages. 3D BluePrint group is using a new approach of integrating design, engineering and construction services. The 3D BluePrint group has well trained architects and engineers, a good infrastructure and working environment to serve clients.

3D Blueprint India disciplines

The 3D BluePrint team carries out all the tasks concerning architecture and engineering and also building processes. The company works in close collaboration with various consultants in order to ensure a good integration of the design, the building structure and its services. Apart from working with its own architects, 3D BluePrint also cooperates with external (international) architects and architectural offices. Thus in an all-engineering contract, the client is free to approach any architect of his choice.

The Essence Of 3D BIM

The significance for 3D BluePrint of working with 3D BIM is to improve the digital exchange of information and to improve communication, whereby all parties have a full overview of the project during all phases. The design specifications and information about objects, materials, quantities and processes are stored in the 3D BIM.

**BIM, Building Information Modeling is a new approach to design and construction management in which digital representation of the building process is used to facilitate the exchange of information in digital format. BIM has changed the way buildings are, and the ways they are designed, engineered and built. This helps the project before, during and after the execution of construction and achieve optimum project and finance management.*

78@Gokuldham



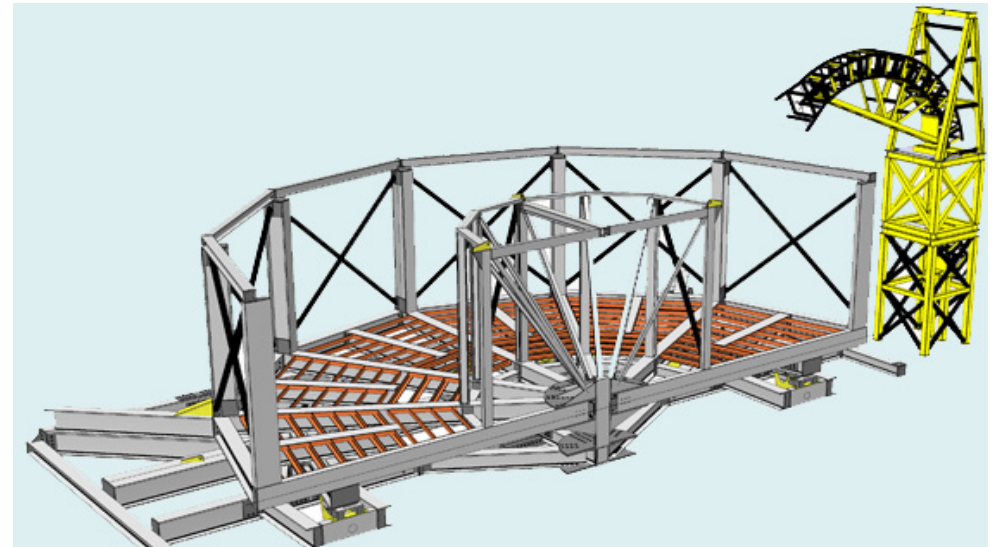
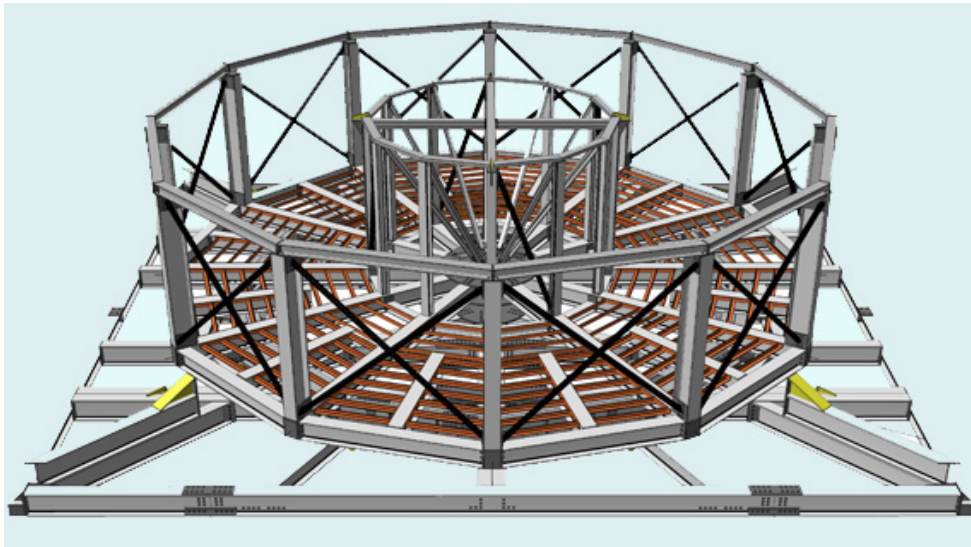
Project name: 78@ Gokuldham
Location: Ahmedabad, India
Type: Residential
Status: Construction phase
Client: TESLA Properties LLP
Architect: Shaan Zaveri
Role: BIM, Quantity, Working drawings
Area: 58,600 m²

Information:

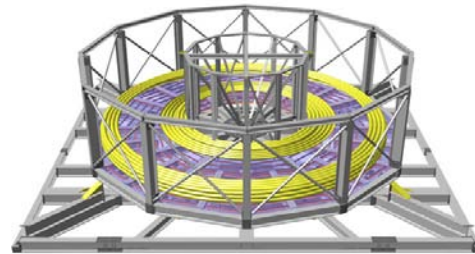
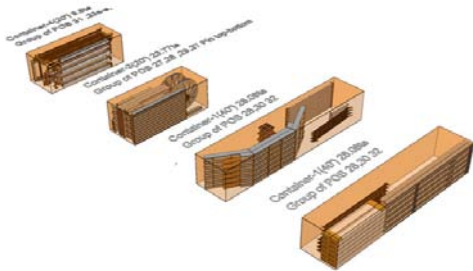
Low rise residential development for 192 premium condominiums, away from city life but still close to it, well planned with clear inner spaces and each home with brand finishes and quality work, site is also furnished with sports facilities, club house, beach pool and recreational space, 3D BluePrint generated BIM and construction drawings well in advance.



Cable Carousel



Logistic Estimate



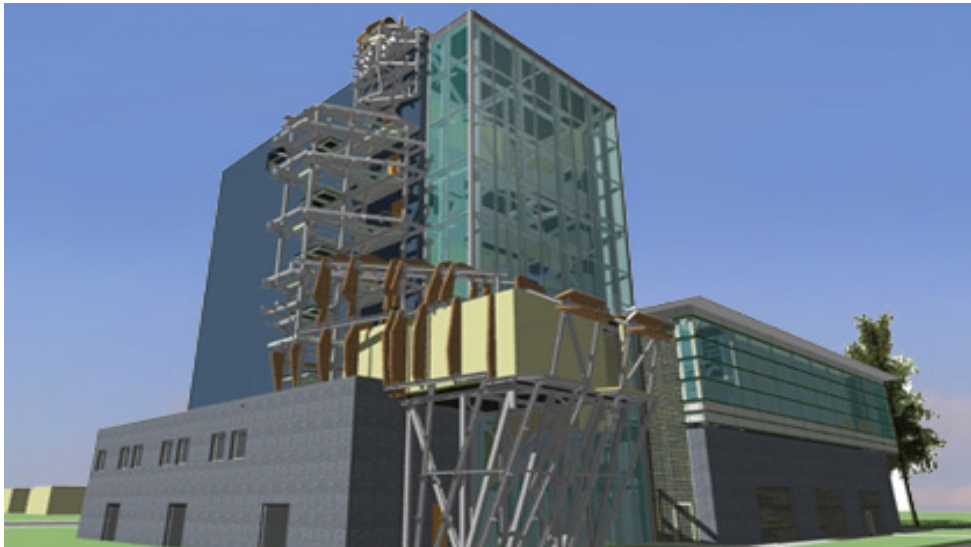
Project name: Cable Carousel
 Location: Amsterdam, Netherlands
 Type: Infrastructure
 Status: Built
 Client: Ocean Team Shipping
 Architect: 3D BluePrint
 Role: Design, BIM, Execution
 Area:

Information:

3D BluePrint was assigned to design and develop a unique cable carousel of 1250 tone capacity which can be delivered by road, rail or vessel anywhere in the world and suitable for self assembly. System is self contained and can be assembled on the quayside or the vessel. Basket Carousel system comprises basket, Spider frame base, Gooseneck tower and 20ft containerized HPU. The basket is rotated by electrically driven under-rollers. The basket can be raised or lowered via jacking cylinders on the spider frame under-rollers.



Corpus



Project name: Corpus
Location: Oegstgeest, Netherlands
Type: Medical museum
Status: Built 2008
Client: Heddes Bouw
Architect: PBV Architects
Role: BIM, Clash detection, Working drawings
Area: 5,500 m²

Information:

After the final-design phase, 3D BluePrint was asked to create a 3D model in order to find clashes related to synchronization of information from all design-partners and to bring the drawings to an execution level. After a number of major changes in relation to budget overrun, 3D BluePrint generated new architectural drawings, with BIM.

Danzigerkade



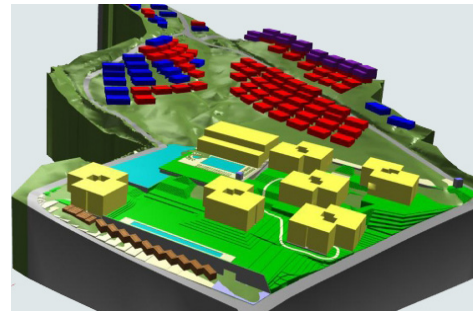
Project name: Danzigerkade
Location: Amsterdam, Netherlands
Type: Corporate office
Status: Building application
Client: 3D BluePrint
Architect: 3D BluePrint
Role: Design, BIM, Coordination
Area: 10,000 m²

Information:

DZK (Danzigerkade) is a corporate office building for 3D BluePrint Architects and Engineers located on the south bank of the river IJ in the harbor area of Amsterdam. We have applied for building application to local authority, next process like tender phase and work phase and construction will follow soon.



Eco Waterhill



Project name: Eco Water Hills
Location: Thailand
Type: Recreation
Status: Design stage
Client: Chined Enterprises Limited
Architect: FABRIC, Holland
Role: BIM, Design coordination
Area: 40,205 m²

Information:

Ko Samui is located in the gulf of Thailand, about 35 km of Surat Thani town, the island is at an altitude of 10 meters and roughly circular in shape, a high terrain site with full of rich scenic beauty. It has 228 hotel rooms with all star facilities, different type of 94 Villas and sufficient parking facilities. The aim of the project is to be self sufficient in terms of water means rain water harvesting, storing and recycling of the water with natural cleaning system and well thought project for energy and sustainability.



Het Goed

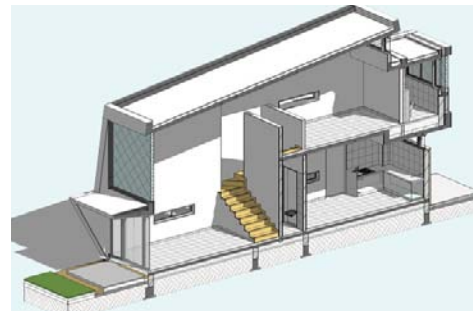


Project name: Het Goed
Location: Apeldoorn, Netherlands
Type: Health Care Center Cum Residential
Status: Built 2010
Client: Woningcorporatie De Goede Woning
Architect: Architectenbureau Micha de Haas
Role: BIM, Working drawings, Project coordination
Area: 10,000 m²

Information:

Project is situated in town Apeldoorn, It consists of old age health care center in a low rise area and high rise building consists of apartments. 3D BIM helped to monitor various design requirement and consequences of needs in terms of space, structure, services and efficient usability. We also supplied all detailed drawings for construction and coordinated the entire project sequence.

Lakewoods



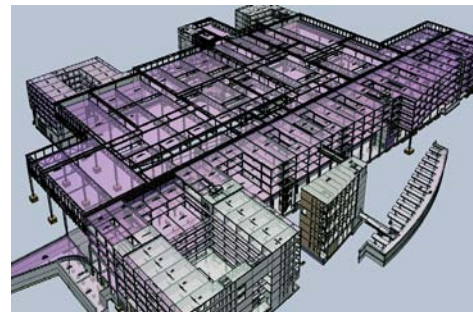
Project name: Lakewoods
Location: Ahmedabad, India
Type: Residential
Status: Construction phase
Client: Sky Heights
Architect: Atelier India Design Pvt. Ltd.
Role: BIM, Quantity, Design coordination
Area: 28,800 m²

Information:

Project is taking shape near Matar (Dist: Kheda) nearly 45 KM from Ahmedabad. It has 142 high end luxurious villas with two types and various plot sizes ranging from 400 to 1200 Sq. Mt. common amenities like club house, swimming pool, play areas, etc are state of the art. Site and services execution started with sample house. The project will be one of its kinds with high end finishes and one of its kind designs. Project expected to complete by December, 2012.



Public Transport Terminal



Project name: Public transport terminal
Location: Breda, Netherlands
Type: Terminals, Commercial, Residential
Status: Tender
Client: ProRail, NS Poort
Architect: Koen Van Velsen
Role: BIM, Clash detection, 4D planning, Quantity-NEN 2580, Visualisation
Area: 60,600 m²

Information:

The project consists of a Rail terminal, Bus terminal, Apartments, Offices and huge deck for parking. The BIM assignment was for all three disciplines - structural, architectural and technical installation. We also prepared several presentations to visualize client's satisfaction on request. Several case studies for noise and travelers facilities were also prepared. We presented 4D simulation to eliminate the bottlenecks in logistics and optimized customer - traveler's satisfaction during the construction.



Ravenweg 1

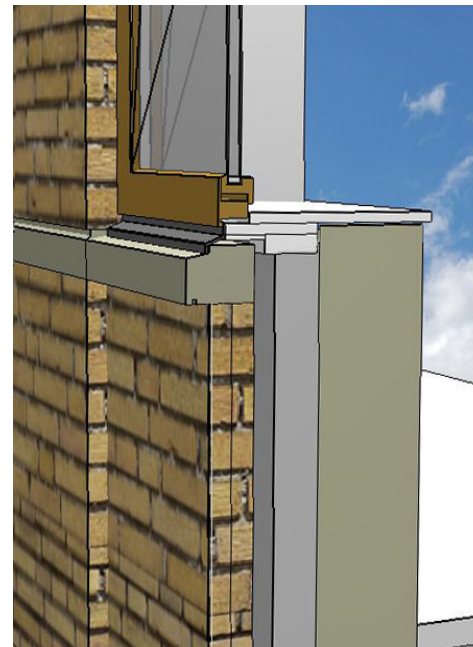


Project name: Ravenweg phase 1
Location: Apeldoorn, Netherlands
Type: Housing
Status: Built
Client: Woningcorporatie De Goede Woning
Architect: 3D BluePrint
Role: BIM, Design coordination, Working drawings
Area: 30,000 m²

Information:

This project involves the restructuring of a post-war district of more than three hectares consisting of two strips on both side of the Ravenweg. Ravenweg phase-1 has 320 dwellings, of which 176 are for rental and 144 are for sale purpose. In addition, a car-park-ratio of 1.8 parking spots per dwelling and a storeroom of about 6 m² per dwelling. 3D BluePrint delivered all the services services, starting from preliminary design till completion.

Zuidschans Block 3

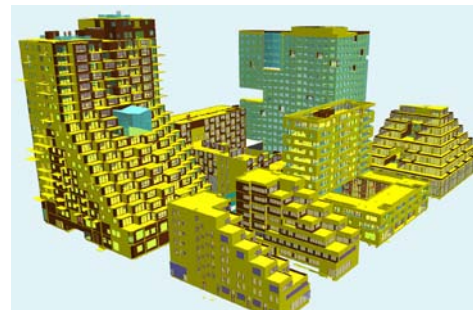
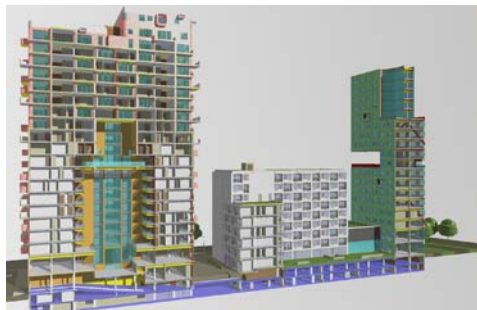
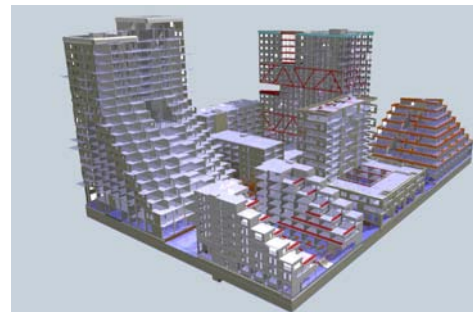


Project name: Zuidschans Block 3
Location: Amsterdam, Netherlands
Type: Housing, Parking
Status: Working Stage
Client: Zuidschans CV
Architect: Diederer Dirrix, 3D Blueprint
Role: BIM, Drawings, Design coordination
Area: 10,000 m²

Information:

Block 3 is one building of entire Zuidschans development. Final stage design is made by Dutch architect Diederer Dirrix and design of basement-parking garage is dealt by 3D BluePrint. This residential block has total seven stories and one basement, each story carries different design apartments. It has total 43 apartments. We finished whole project with smart use of BIM.

Zuidschans



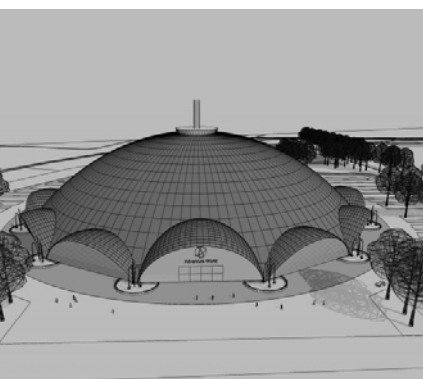
Project name: Zuidschans Gerschwin Cluster 1
Location: Amsterdam, Netherlands
Type: Housing, Offices
Status: Final Design
Client: Zuidschans CV
Architect: Claus en Kaan, Architecten Cie, Diederien Dirrix, Riken Yamamoto
Role: BIM, Drawings, Design coordination
Area: 1,20,000 m²

Information:

The project consists of a two storied underground parking garage, five residential buildings and one office building. All the buildings are designed by different (international) architects, among them Steven Holl and Riken Yamamoto. Client consulted 3D Blueprint to help them out with BIM for the complexity of project, scale and coordination. 3D Blueprint dealt with precise BIM and communication.



Project	Type	Year	Size	Country
Railroad museum	Museum	2005	13,500 m ²	Netherlands
Schutterstoren	Housing	2006		Netherlands
Overhoeks	Public Info. Centre	2007	500 m ²	Netherlands
Villa Lage Vuursche	House	2007	875 m ²	Netherlands
Centrum Amsterdam Noord	Housing, Commercial	2008		Netherlands
Adventure World	Recreation	2009	30,000 m ²	Netherlands
Mytyschool de Trappenberg	Rehabilitation Centre	2009	5,500 m ²	Netherlands
Ravenweg phase 2	Housing	2009	30,000 m ²	Netherlands



Woonzorgcentrum Schipluiden	Care Centre	2009	7,450 m ²	Netherlands
Delhi 6 Apartments	Housing	2010	10,000 m ²	India
N.I.W.S., Goa	Recreation, Competition	2010	4,330 m ²	India
Xperience World	Leisure	2010	3,000 m ²	Netherlands
Dutch Graves	Monumental	2011		India
Landlust	Housing, Renovation	2011	15,000 m ²	Netherlands
Huisvesting Amoveerder Oranje	Office, Renovation	2012	1,250 m ²	Netherlands
Virtuous Mall	Retail Mall, Multiplex	2012	54,000 m ²	India



BIM CONSULTANTS